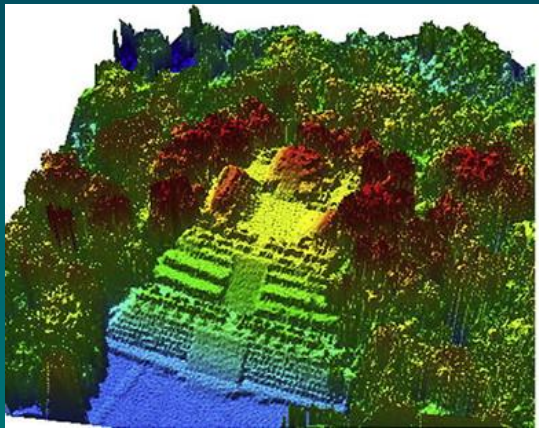
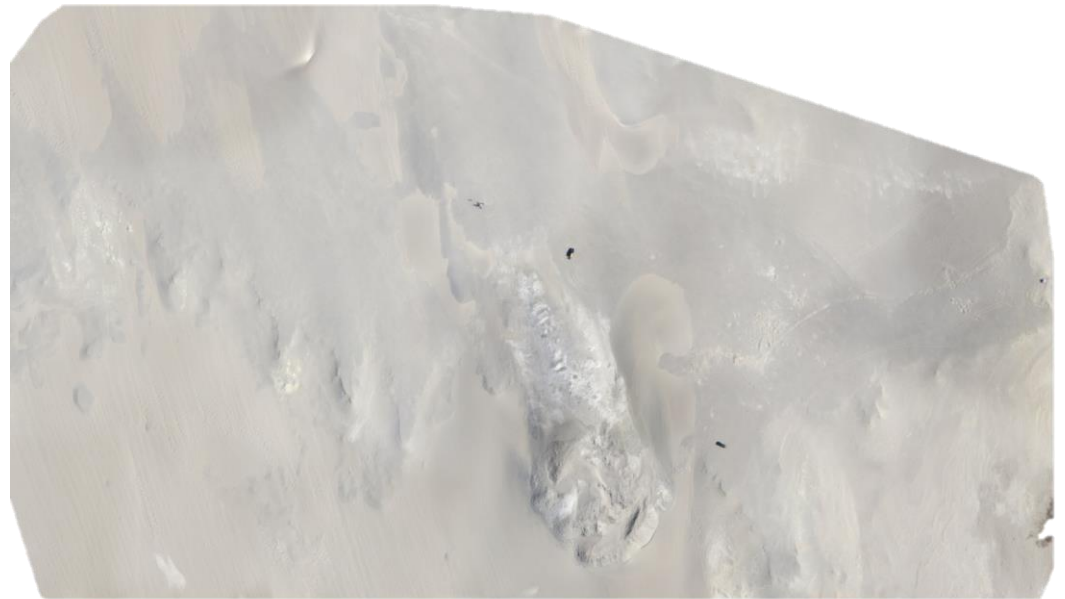


Archaeology and Autonomous Systems



Survey and site identification

- High resolution photographic and topographic mapping

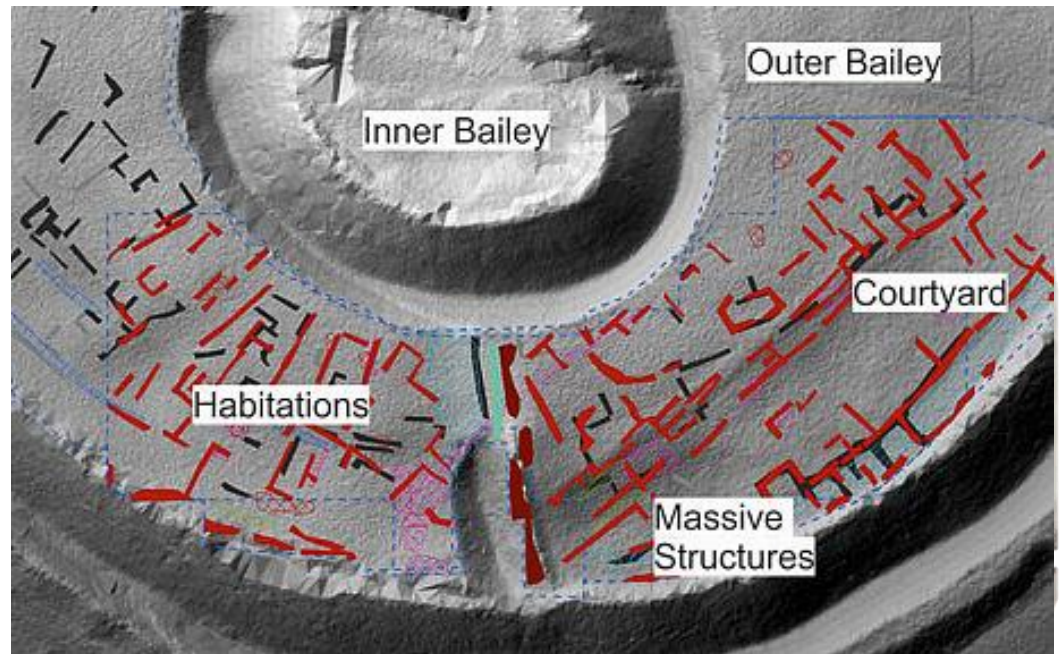


Survey and site identification



Survey and site identification

- High resolution photographic and topographic mapping
- Multispectral imaging
- Subsurface imaging



Scope and significance

- Anywhere on the globe ... on land or underwater
- UNESCO estimate over 3 million shipwrecks world wide, with a desire to quantify and research
- Mapping and monitoring as part of large scale infrastructure projects as well as research
- Automation of target identification(?) – cross over with military interests

